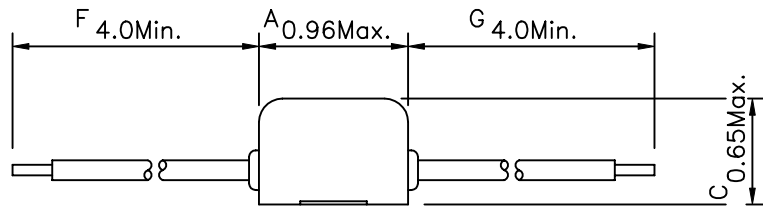
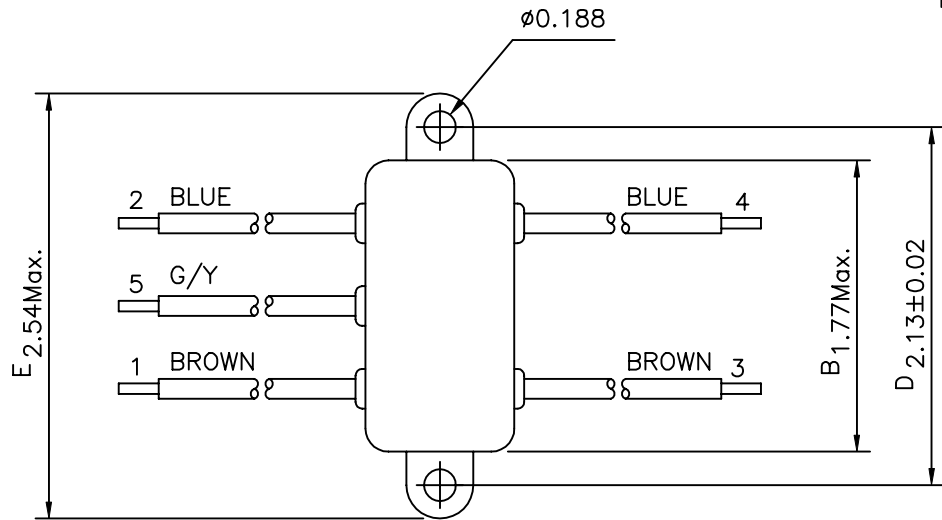
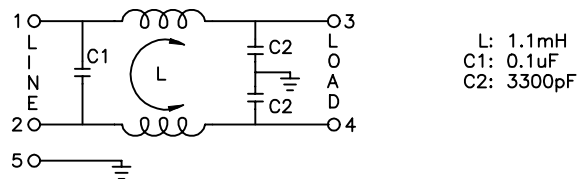


| Revision | | | |
|----------|-------------|------|----------|
| Rev. | Description | Date | Approved |
| | | | |
| | | | |
| | | | |

PHYSICAL DIMENSIONS:



SCHEMATIC:



1. ELECTRICAL CHARACTERISTICS:

- 1-1. VOLTAGE RATING 115/250VAC
- 1-2. CURRENT RATING
 - A. AT 115VAC 2 A RMS Max.
 - B. AT 250VAC 2 A RMS Max.
- 1-3. OPERATING FREQUENCY..... 50/60 Hz
- 1-4. LEAKAGE CURRENT: EACH LINE TO GROUND
 - A. @115VAC 60Hz 0.25 mA Max.
 - B. @250VAC 50Hz 0.45 mA Max.
- 1-5. HIPOT RATING (FOR ONE MINUTE)
 - A. LINE TO GROUND 2250VDC
 - B. LINE TO LINE 1450VDC
- 1-6. TEMPERATURE RANGE: -25 TO +85 DEGREE C
- 1-7. MINIMUM INSERTION LOSS IN dB: (AT 50 OHM SYSTEM)

| FREQ. MHz | .01 | .05 | .10 | .15 | .50 | 1.0 | 5.0 | 10 | 30 |
|--------------|-----|-----|-----|-----|-----|-----|-----|----|----|
| COM. MODE dB | / | / | / | 15 | 30 | 38 | 45 | 45 | 40 |
| DIF. MODE dB | / | / | / | 6 | 15 | 20 | 40 | 45 | 45 |

1-8. SAFETY



| range (mm) | Tolerance +/- (mm) | Qualtek Electronics Corp. PPC DIVISION | | |
|------------|--------------------|---|--------------|---------------|
| | | Part Number: 851-02/002 | | |
| 0-1 | 0.15 | Description: EMI FILTER | | |
| 1-6 | 0.20 | | | |
| 6-18 | 0.30 | | | |
| 18-50 | 0.50 | | | |
| 50-120 | 0.70 | Drawn/Date | Checked/Date | Approved/Date |
| 120-250 | 0.90 | B.ZHANG 02-11-03 | 02-11-03 | JJH/02-11-03 |
| 250-500 | 1.20 | | | |